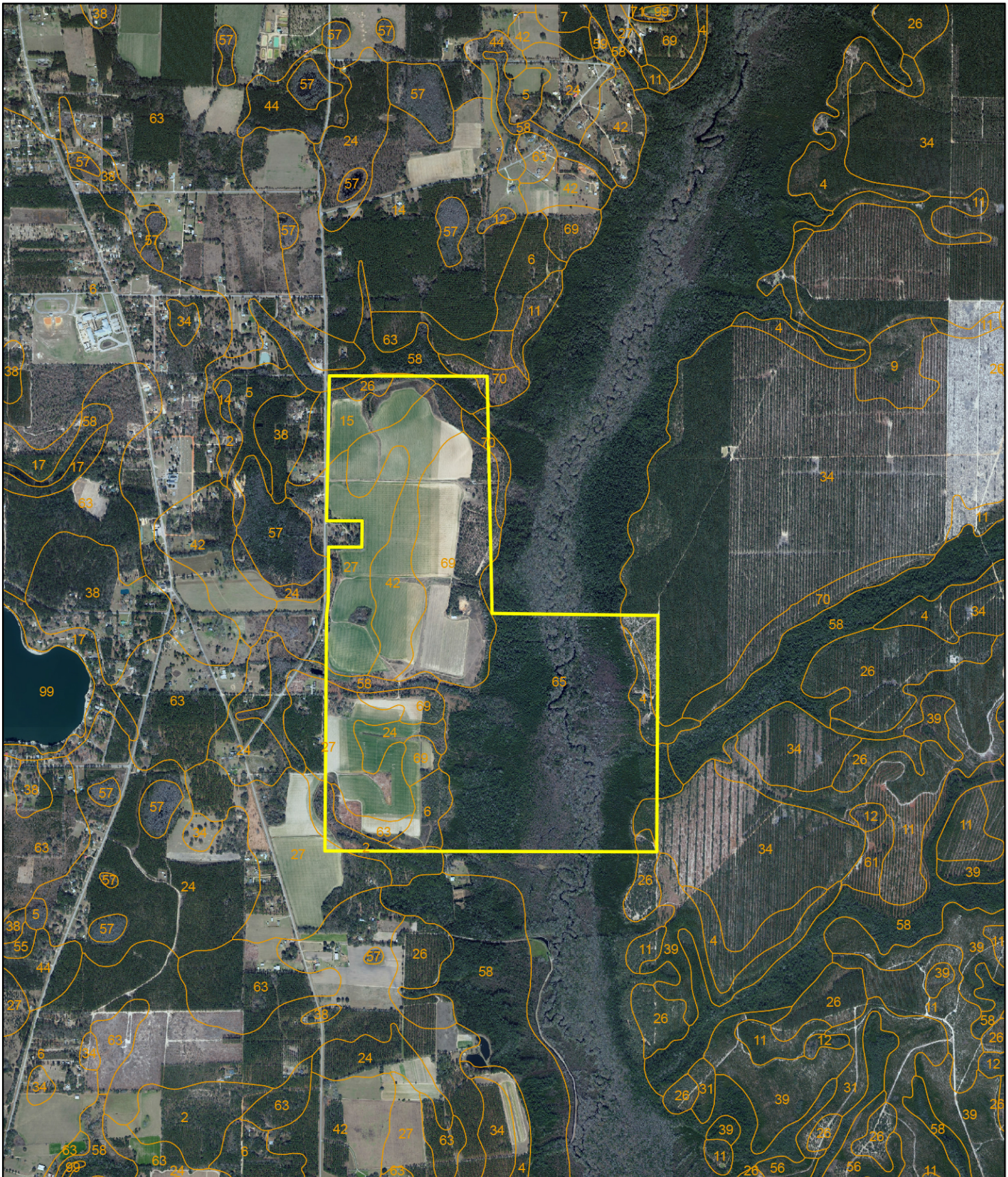


Telogia Creek Farm - Liberty County, FL



D.E. Billingsley
Licensed Real Estate Broker
Alabama/Florida/Georgia/Montana

Phone: (850) 510-3309
Email: DE@debillingsley.com
www.debillingsley.com

Liberty County

Soil Type

2	Albany sand, 0-5% slopes	65	Pickney, Dorovan, and Bibb soils, frequently flooded
4	Alpin-Foxworth complex, 5-12% slopes	66	Wahee and Ochlockonee soils, 0-3% slopes, occasionally flooded
5	Rains and Bladen soils	67	Goldhead sand
6	Blanton sand, 0-5% slopes	68	Goldhead-Meadowbrook complex, depressional
7	Blanton sand, 5-8% slopes	69	Troup sand, 0-5% slopes
8	Brickyard clay loam, frequently flooded	70	Troup sand, 5-8% slopes
9	Centenary sand, 0-5% slopes	71	Pits
11	Chipleigh-Foxworth complex, 0-5% slopes	72	Lakeland sand, 30-85% slopes
12	Rutlege and Plummer soils, depressional	73	Foxworth-Hosford-Lucy complex 8-25% slopes
13	Dorovan-Pamlico complex, depressional	74	Garcon, Ochlockonee, and Ousley soils, occasionally flooded
14	Dothan loamy sand, 0-2% slopes	75	Brantley-Okeelala-Lucy complex, 8-45% slopes
15	Dothan loamy sand, 2-5% slopes	78	Lucy-Blanton-Cowarts complex, 8-45% slopes
17	Dothan-Fuquay complex, 8-12% slopes	81	Scranton fine sand
24	Goldsboro loamy sand, 0-2% slopes	82	Brickyard and Chowan soils, frequently flooded
25	Goldsboro loamy sand, 2-5% slopes	83	Plummer, Sapelo, and Pottsbury soils
26	Foxworth sand, 0-5% slopes	91	Woodington loamy sand
27	Fuquay loamy sand, 0-5% slopes	92	Pamlico-Pickney complex, frequently flooded
30	Ellore, Bibb, and Meggett soils, 0-3% slopes, frequently flooded	95	Bibb, Rains, and Garcon soils, occasionally flooded
31	Hurricane and Chipleigh soils, 0-3% slopes	96	Foxworth-Lakeland complex, 0-5% slopes
32	Plummer and Pelham soils	97	Foxworth-Lakeland complex, 5-15% slopes
34	Lakeland sand, 0-5% slopes	98	Leon-Chipleigh complex
35	Lakeland sand, 5-8% slopes	99	Water
36	Lakeland sand, 8-15% slopes	101	Albany-Blanton complex, 0-5% slopes
37	Lakeland-Foxworth complex, 15-30% slopes		
38	Leefield loamy sand, 0-5% slopes		
39	Leon sand		
42	Lucy sand, 0-5% slopes		
44	Lynchburg loamy sand		
45	Lynn Haven sand		
46	Hurricane, Leon, and Albany soils		
47	Torhunta-Lynn Haven-Croatan complex, frequently flooded		
48	Meadowbrook sand		
49	Meadowbrook sand, slough		
54	Pelham loamy sand		
55	Plummer sand, 0-5% slopes		
56	Pottsbury sand		
57	Surrency, Pantego, and Croatan soils, depressional		
58	Rutlege, Bibb, and Surrency soils, frequently flooded		
59	Hosford mucky coarse sand, 2-8% slopes		
60	Sapelo sand		
61	Osier sand		
62	Scranton loamy sand, slough		
63	Stilson fine sand, 0-3% slopes		