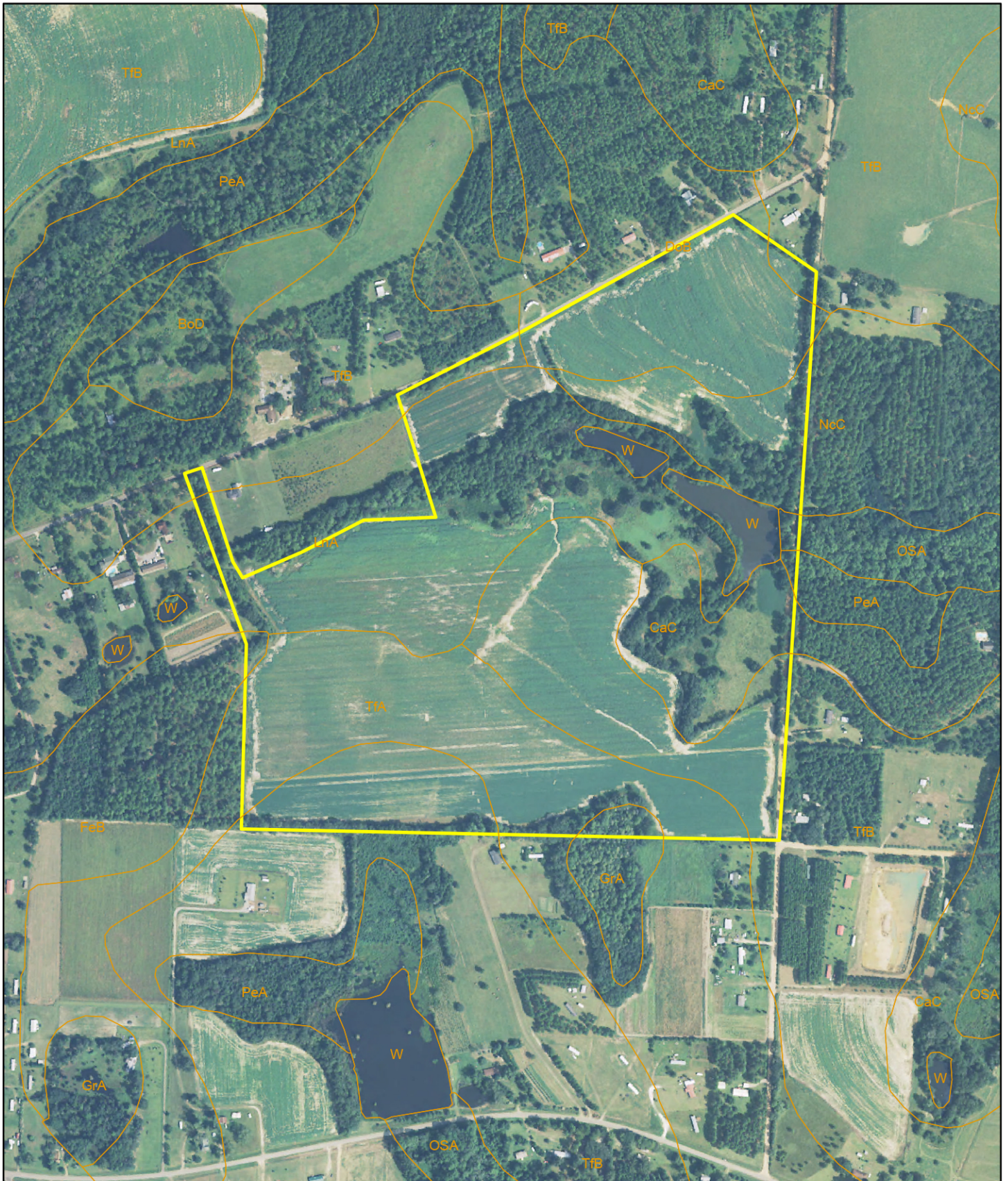


# Jordan - Grady County, GA



D.E. Billingsley  
Licensed Real Estate Broker  
Alabama/Florida/Georgia/Montana

Phone: (850) 510-3309  
Email: [DE@debillingsley.com](mailto:DE@debillingsley.com)  
[www.debillingsley.com](http://www.debillingsley.com)

# Grady County

## Soil Type

BgB	Bigbee loamy fine sand, 0-5% slopes, rarely flooded	WhA	Wahee fine sandy loam, 0-2% slopes, occasionally flooded
BIB	Blanton loamy sand, 0-5% slopes	W	Water
BID	Blanton loamy sand, 5-12% slopes		
BoB	Bonneau loamy sand, 0-5% slopes		
BoD	Bonneau loamy sand, 5-12% slopes		
CaB	Carnegie gravelly sandy loam, 2-5% slopes		
CaC	Carnegie gravelly sandy loam, 5-8% slopes		
CgC	Cowarts-Gritney complex, 5-8% slopes		
CgD	Cowarts-Gritney complex, 8-12% slopes		
DoA	Dothan loamy sand, 0-2% slopes		
DoB	Dothan loamy sand, 2-5% slopes		
FeA	Faceville sandy loam, 0-2% slopes		
FeB	Faceville sandy loam, 2-5% slopes		
FeC	Faceville sandy loam, 5-8% slopes		
FuB	Fuquay loamy sand, 0-5% slopes		
GoA	Goldsboro loamy sand, 0-2% slopes		
GrA	Grady sandy loam, ponded		
HvA	Hornsville fine sandy loam, 0-2% slopes		
LkB	Lakeland sand, 0-5% slopes		
LkD	Lakeland sand, 5-12% slopes		
LmB	Lucy loamy sand, 0-5% slopes		
LmC	Lucy loamy sand, 5-8% slopes		
LnA	Lynchburg fine sandy loam, 0-2% slopes		
NaB	Nankin loamy fine sand, 2-5% slopes		
NcC	Nankin-Cowarts complex, 5-8% slopes		
NcD	Nankin-Cowarts complex, 8-12% slopes		
NoA	Norfolk loamy sand, 0-2% slopes		
NoB	Norfolk loamy sand, 2-5% slopes		
NoC	Norfolk loamy sand, 5-8% slopes		
OcA	Ocilla loamy fine sand, 0-2% slopes		
OeA	Orangeburg loamy sand, 0-2% slopes		
OeB	Orangeburg loamy sand, 2-5% slopes		
OeC	Orangeburg loamy sand, 5-8% slopes		
OeD	Orangeburg loamy sand, 8-12% slopes		
OSA	Osier and Bibb soils, frequently flooded		
PeA	Pelham loamy fine sand, frequently flooded		
ReA	Rembert sandy loam, frequently flooded		
TfA	Tifton loamy sand, 0-2% slopes		
TfB	Tifton loamy sand, 2-5% slopes		
TfC	Tifton loamy sand, 5-8% slopes		
TrB	Troup loamy sand, 0-5% slopes		
Ud	Udorthents, loamy		
Up	Udorthents-Pits complex		
UtC	Urban land-Tifton complex, 0-8% slopes		
WaB	Wagram loamy sand, 0-5% slopes		